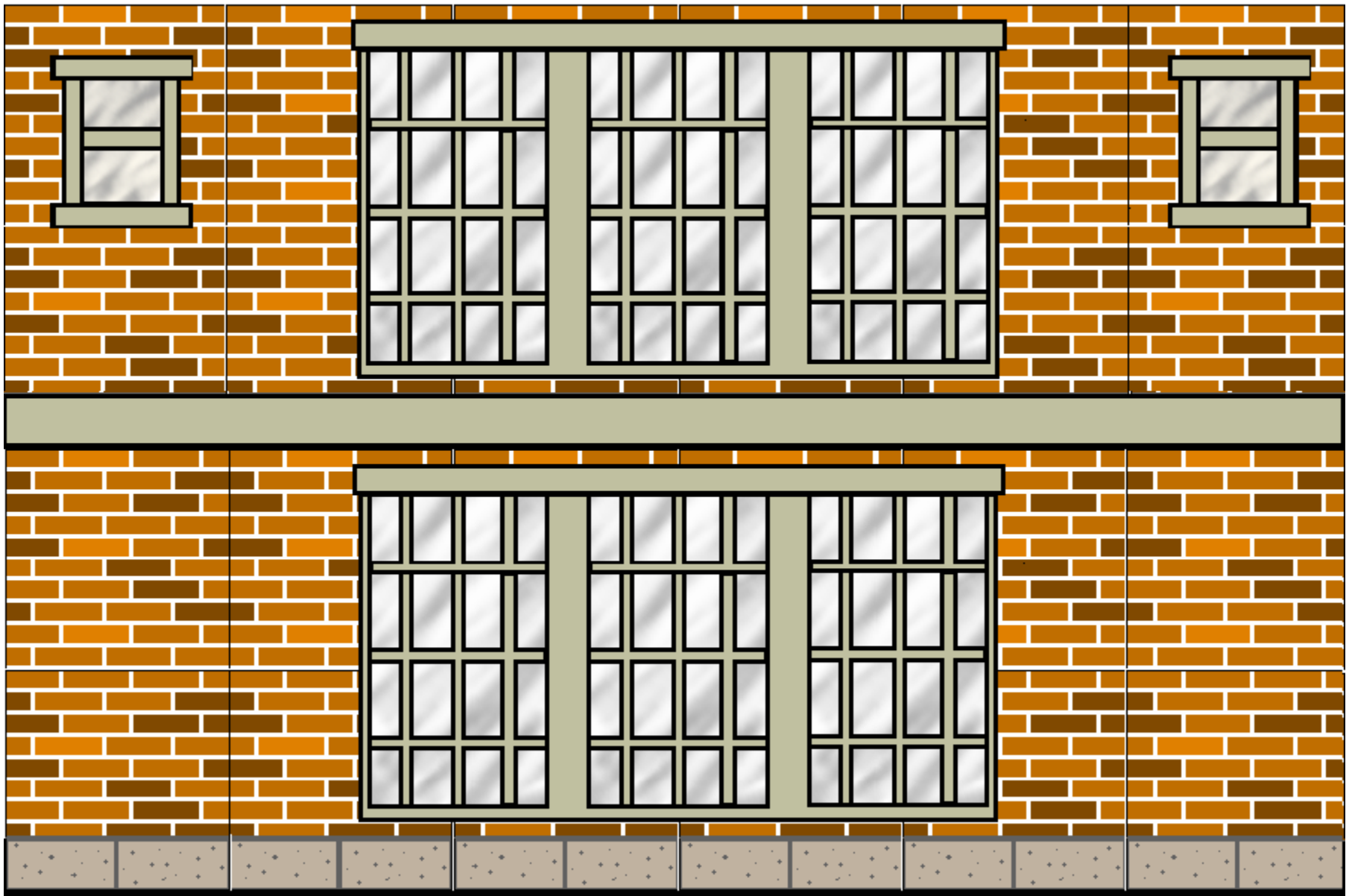
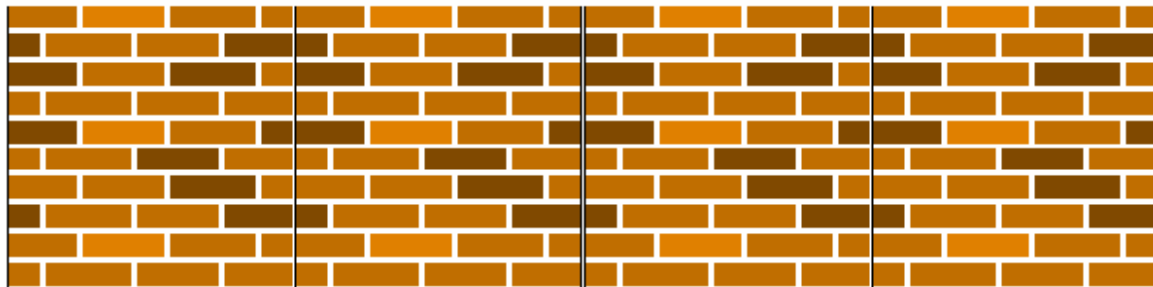
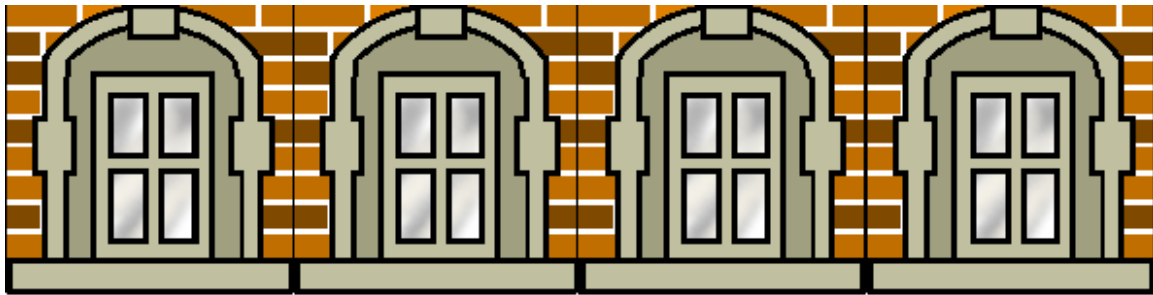
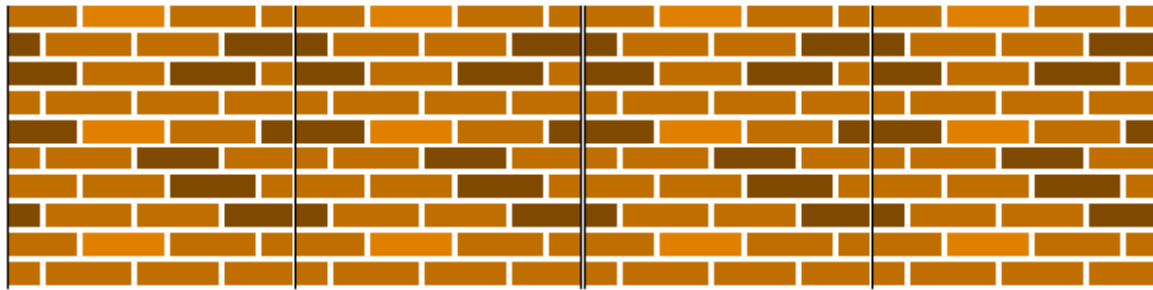
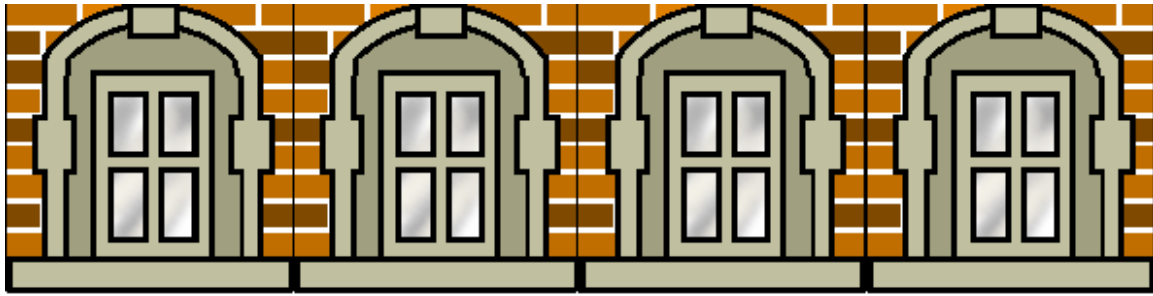




Front (~9 inches long)



Sides and Back (Print 3) (Should be ~9" wide)



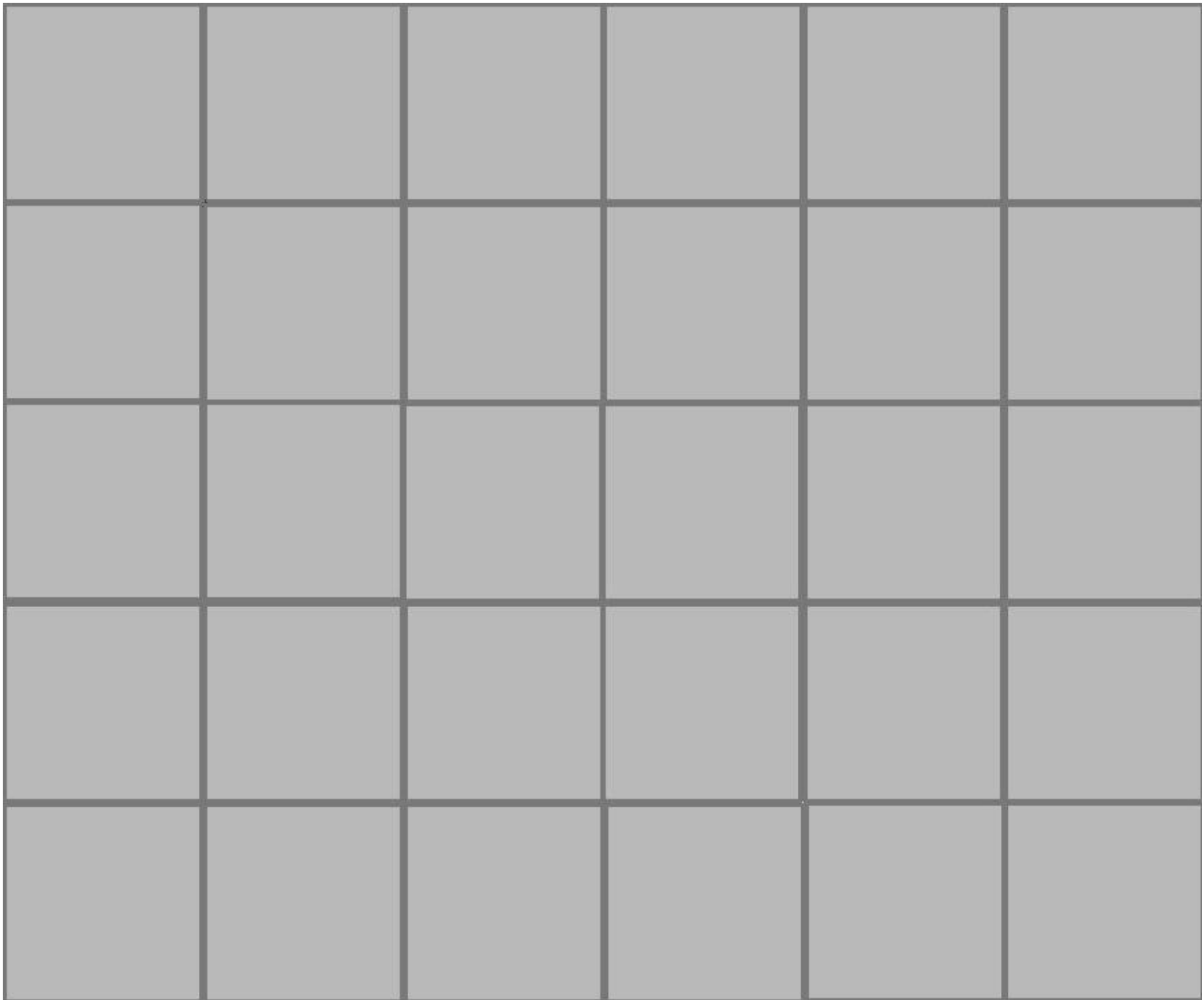
Tower Blocks (one for each corner). Each Tower is 1 x 1 x 1



Front sloped roof

Side Sloped roof (Print 3)

Roof pieces must be trimmed on each side by ~1.5". You may have to also trim an extra  $\frac{1}{4}$ ", depending on how you assemble the towers.



Roof (cut one 4 x 4 grid from this); from remainder, cut four 1 x 1 squares for tower rooftops

## Dr. Strange's Sanctum Sanctorum

### Supplies:

¼" foam board  
Spray adhesive  
Hot glue gun with glue sticks  
Exacto knife or rotary cutter

### Instructions:

Cut out the shapes from your printout.  
Cut out the same shapes in the foam.  
Cut out a 9 x 9 inch square from the foam. This goes on top of the lower section and gives you a place to glue the towers and sloped roof

Spray adhesive on to walls and roof and press on the cut outs.  
Use hot glue gun to attach walls at corners.  
Glue 9 x 9 piece of foam to top. You should have a box by now.

Cut out the corner towers and assemble them according to the picture. Be careful to place the windows on the correct side.

Hot glue the sloped roof parts onto the sides of the towers at a 45 degree angle. Make sure the mystic sigil roof is on the front. Getting the roof on right takes some skill, so be patient and work carefully. Hot glue the tower assembly onto the top of the 9 x 9 piece of foam.  
Hot glue the top roof onto the top of the sloped roof pieces. It does have a hollow space beneath.

By the hoary hosts of Hoggoth, defend your Sanctum Sanctorum from the Evil Forces of The Dread Dormammu.

**Synthezoid** on [hcrealms.com](http://hcrealms.com) and [vsrealms.com](http://vsrealms.com)

JLovegrove1@yahoo.com

