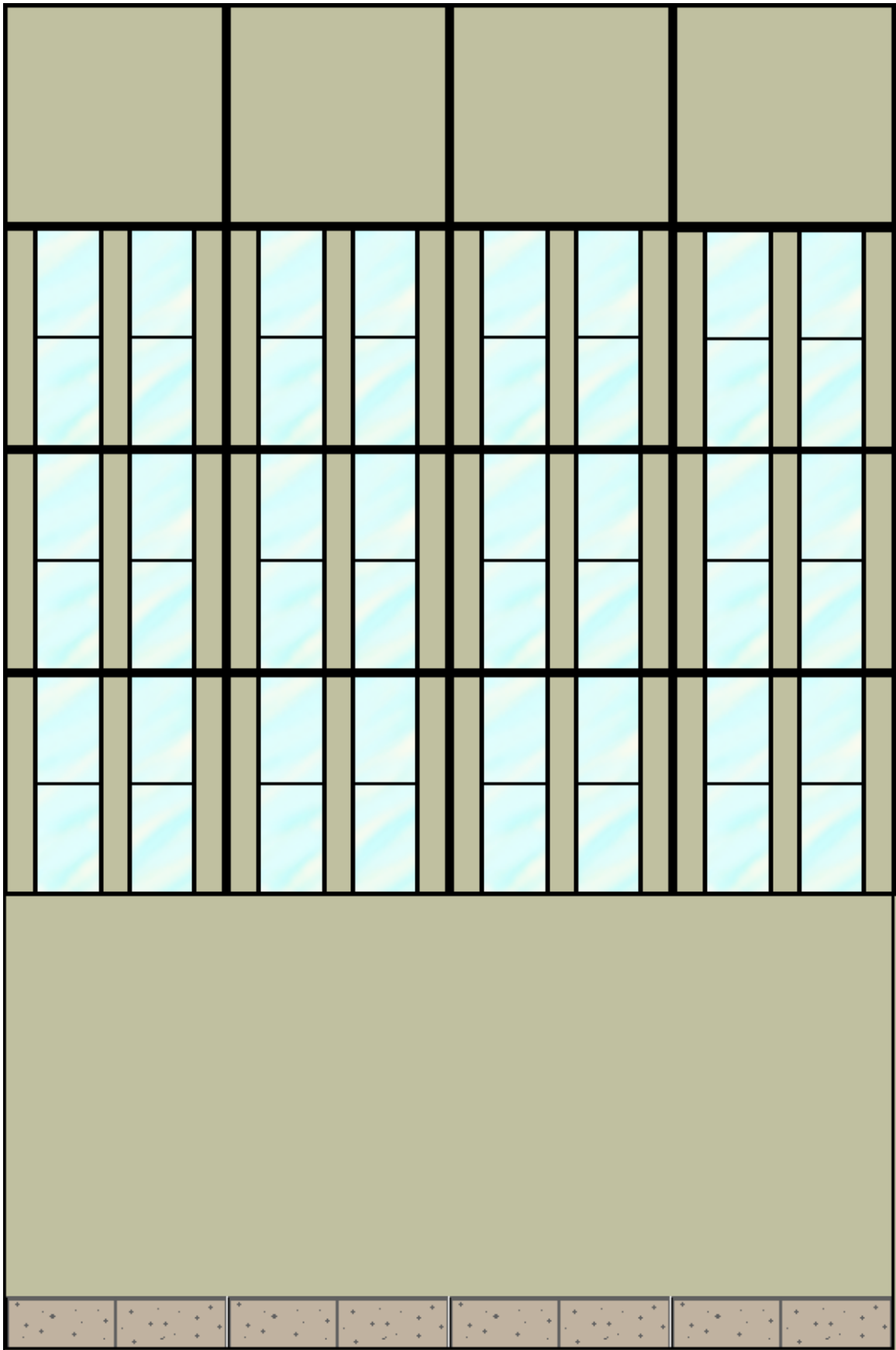
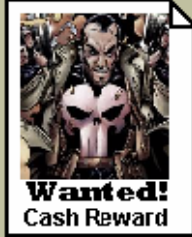
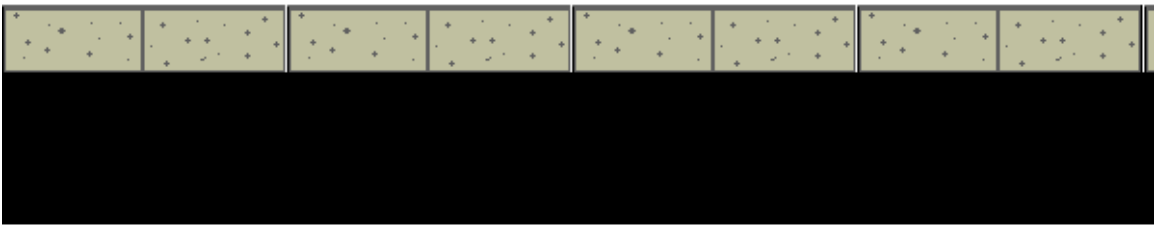
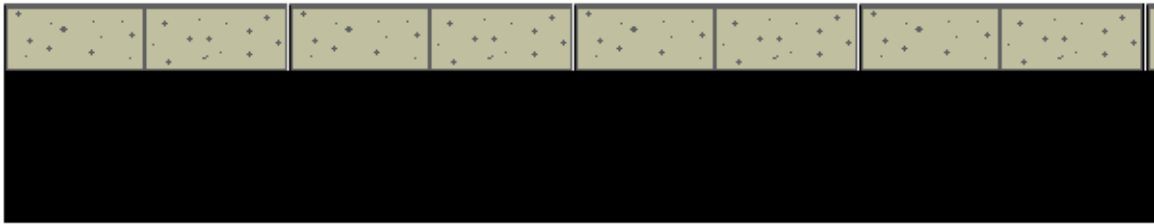
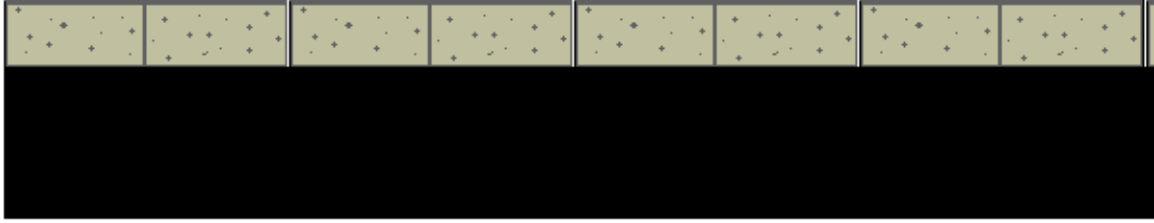
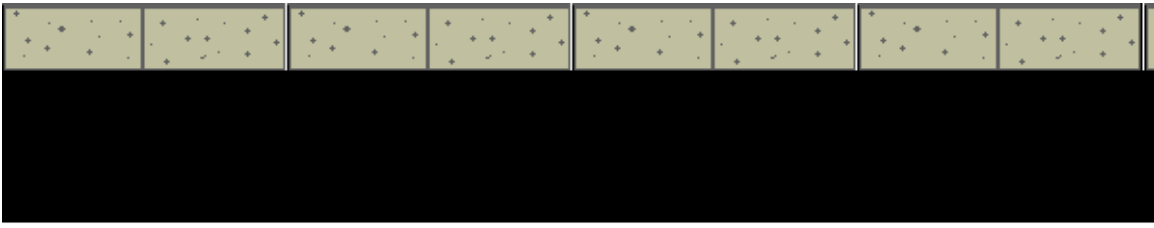


Front (6" x 9" - Print 1)



Side (6" x "9 – Print 2)

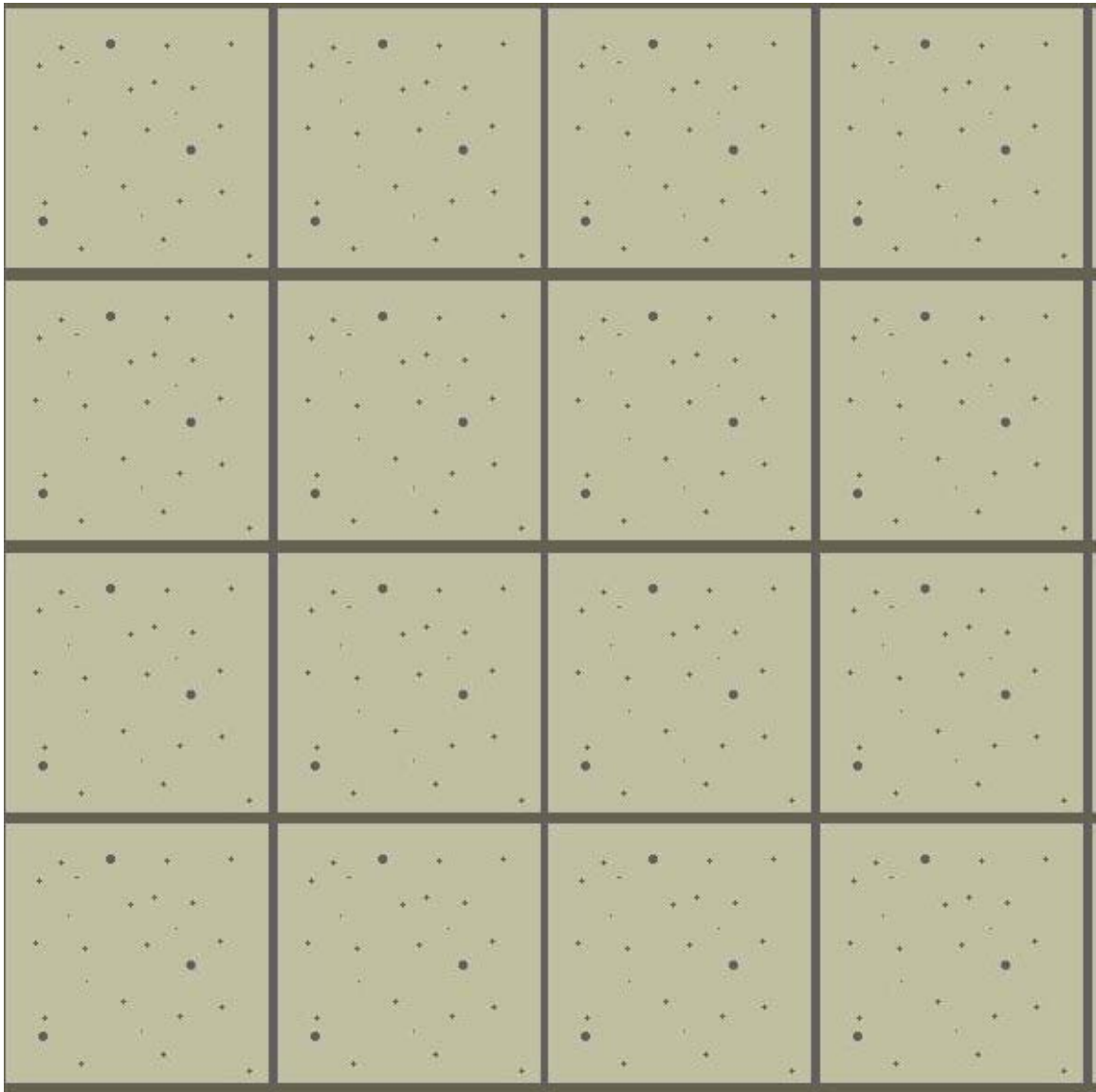
[Light Blue Pattern]		[Light Blue Pattern]		[Light Blue Pattern]		[Light Blue Pattern]		[Light Blue Pattern]		[Light Blue Pattern]		[Light Blue Pattern]		[Light Blue Pattern]	
[Light Blue Pattern]		[Light Blue Pattern]		[Light Blue Pattern]		[Light Blue Pattern]		[Light Blue Pattern]		[Light Blue Pattern]		[Light Blue Pattern]		[Light Blue Pattern]	
[Light Blue Pattern]		[Light Blue Pattern]		[Light Blue Pattern]		[Light Blue Pattern]		[Light Blue Pattern]		[Light Blue Pattern]		[Light Blue Pattern]		[Light Blue Pattern]	
  															
[Dark Blue Pattern]		[Dark Blue Pattern]		[Dark Blue Pattern]		[Dark Blue Pattern]		[Dark Blue Pattern]		[Dark Blue Pattern]		[Dark Blue Pattern]		[Dark Blue Pattern]	



Wall risers for Roof (Print 1)

DAILY BUGLE

Roof Sign



Roof
(Print 1 each)

The Daily Bugle

Supplies:

¼" foam board
Spray adhesive
Hot glue gun with glue sticks
Exacto-knife or rotary cutter

Instructions

This one is easy. It's just a box with an open bottom. The only trick is the roof, which is slightly below the top of the walls for a more realistic look. The Daily Bugle in the comics is usually drawn a lot bigger, but this building is easy to use in games and serves perfectly as elevated terrain.

1. Cut out one front of the building, two identical sides and one side with the wanted posters on it. Cut out the roof. Cut out foam pieces to match all the walls and roof. Use the spray adhesive to attach the paper to the foam.
2. Cut out the wall risers. These pieces will be glued at the top of the building walls on the back sides of the walls. They create the blocks for the recessed roof. Use the spray adhesive and secure these cutouts to the top side of each of the four walls.
3. Use the hotglue gun to attach two walls together.
4. Use the hotglue gun to glue in the recessed roof to the two wall pieces. The roof-line goes right above the black area.
5. Use the hotglue gun to glue the other two walls to finish the box.
6. (Optional) Cut out roof sign, secure to foam and attach to roof.
7. Use the Daily Bugle as a headquarters for your HeroClix army to bring in those wanted scumbags on the posters. ☺

Enjoy!

Synthezoid on hcrealms.com and vsrealms.com

JLovegrove1@yahoo.com

